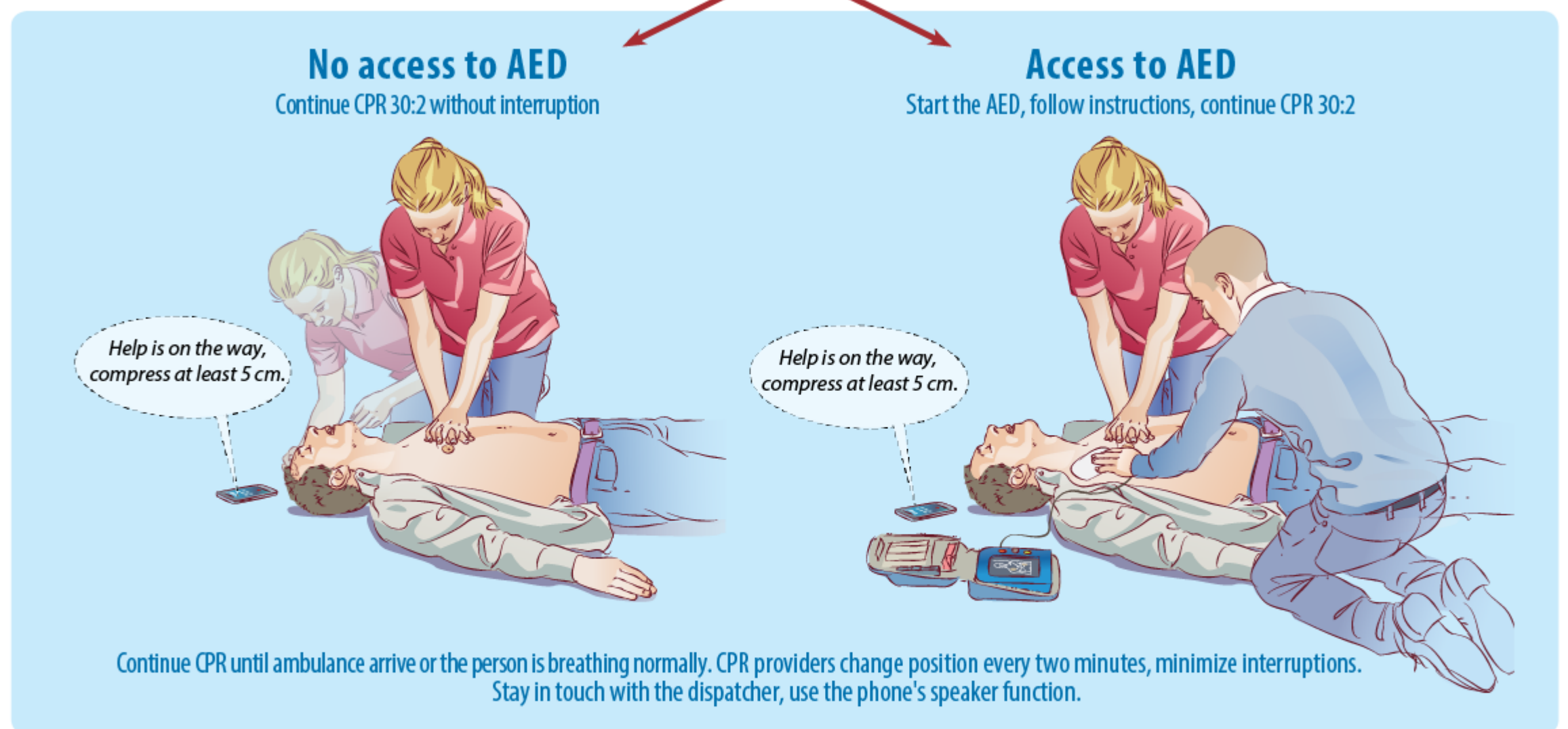
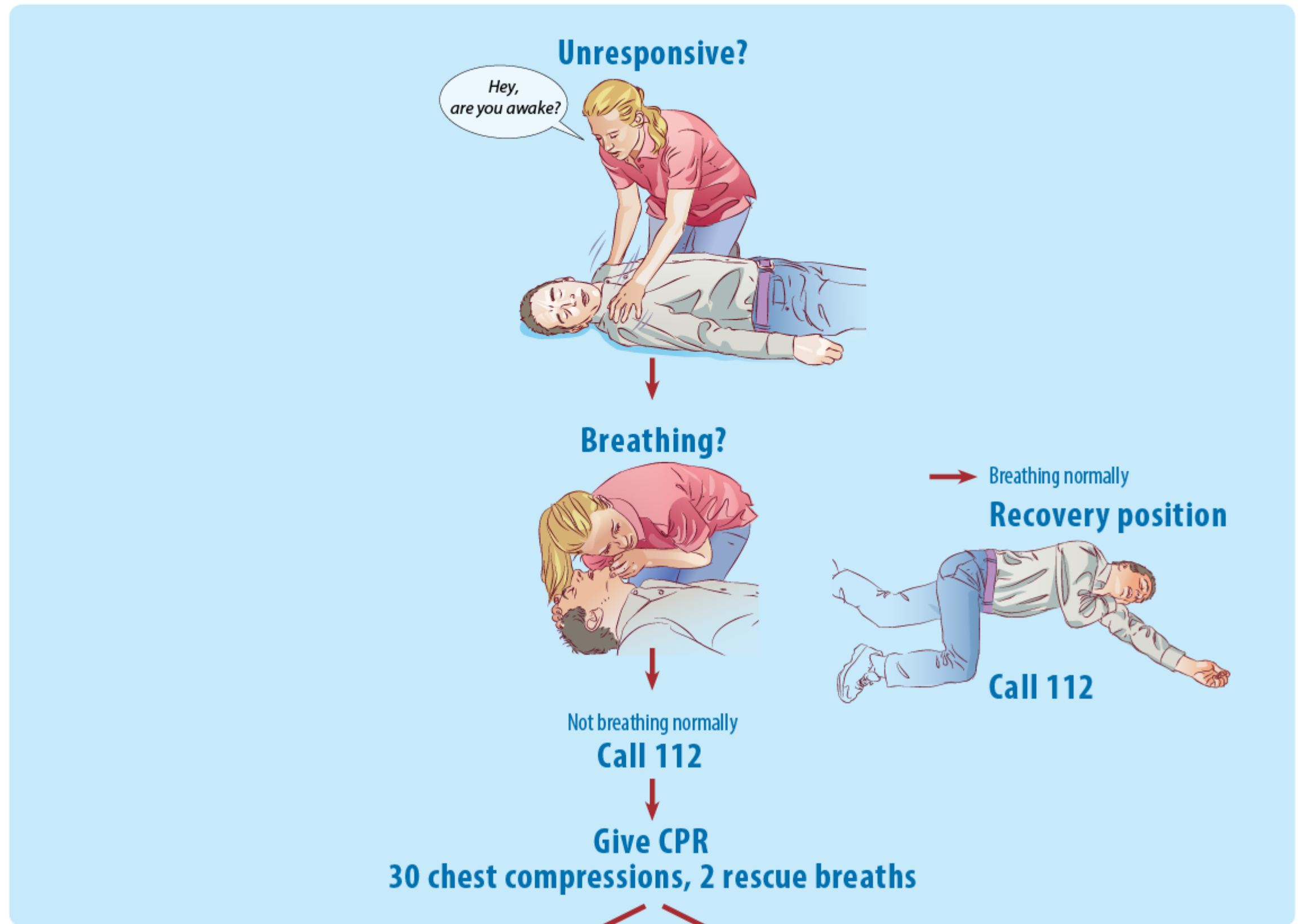


# Adult basic life support



**CHILDREN** When children suffer a cardiac arrest it is usually caused by not being able to breathe normally. Give the child 5 initial breaths followed by one minute of CPR 30:2, before calling 112. Continue CPR 30:2. Children 0-1 years: compress 4 cm. Children 1 year to puberty: compress 5 cm.